

DISTRIB. DI POTENZA

QUADRI ELETTRICI
NUOVA COSTRUZIONE
STRUTTURA RICETTIVA

COMMITTENTE

Società'S.A.R. s.r.l.

Responsabile

Indirizzo

C.A.P.

Città'

Tel.

Fax

STUDIO DI PROGETTAZIONE

Società'STUDIO TECNICO ING. LUCA FORNONI

ResponsabileIng. Fornoni Luca

IndirizzoVia Vittorio Emanuele II n.1

C.A.P.25039

Città'Travagliato (BS)

Tel.030.660237

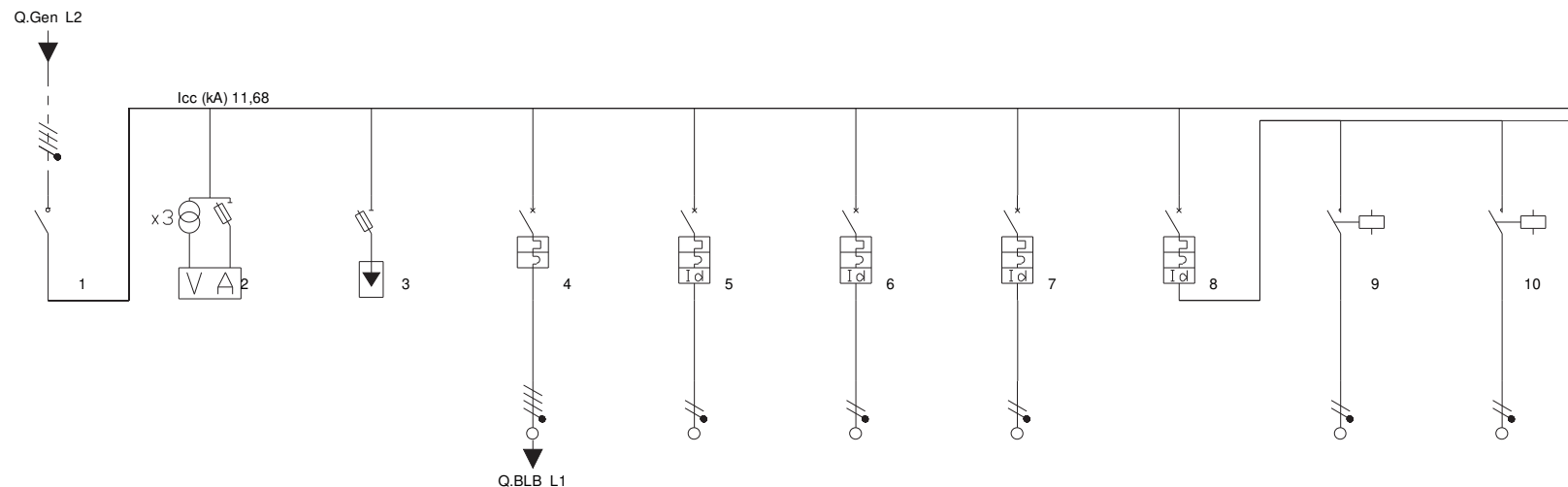
Fax030.660237

REV.	DATA	DESCRIZIONE	Disegnatore	Verificato	Approvato

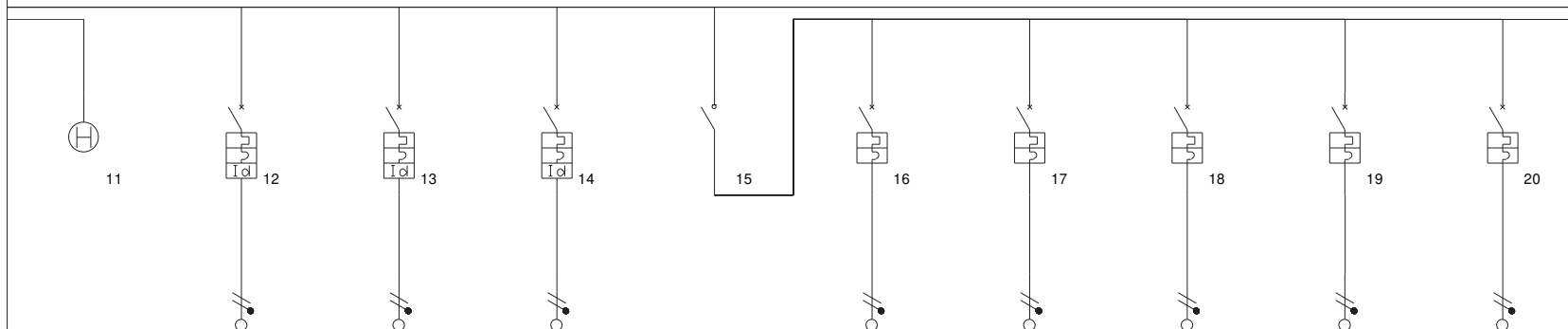
NOTE:

[illegible]

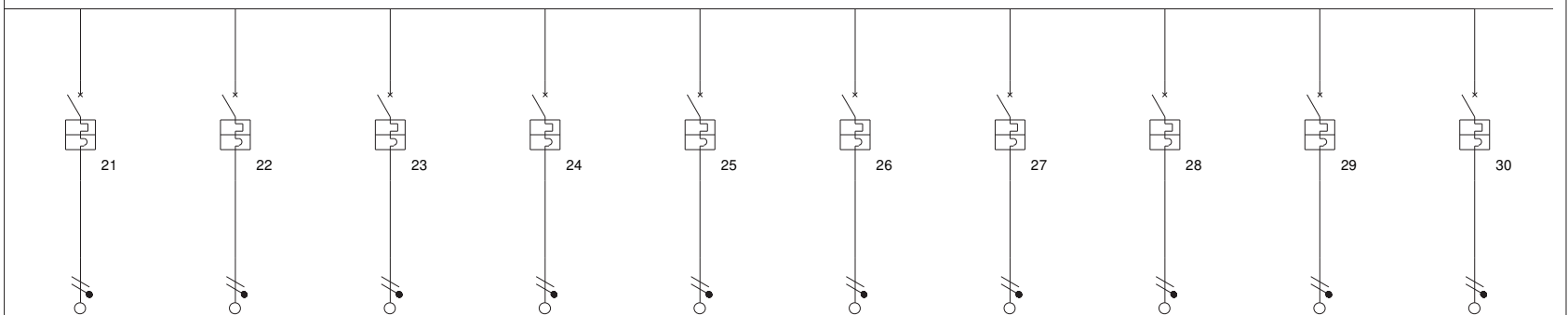
Calcolato

[illegible]

Calcolato

[illegible]

Calcolato

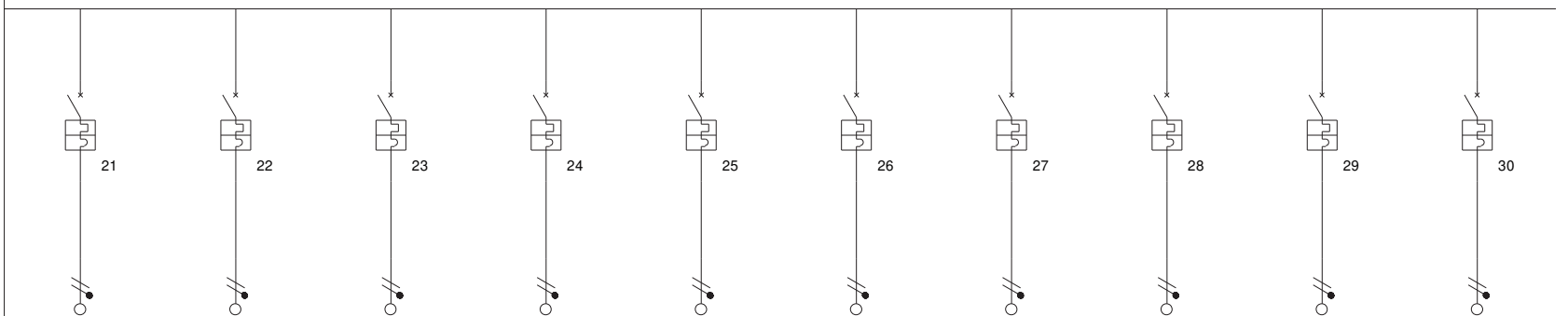
[illegible]

[illegible]

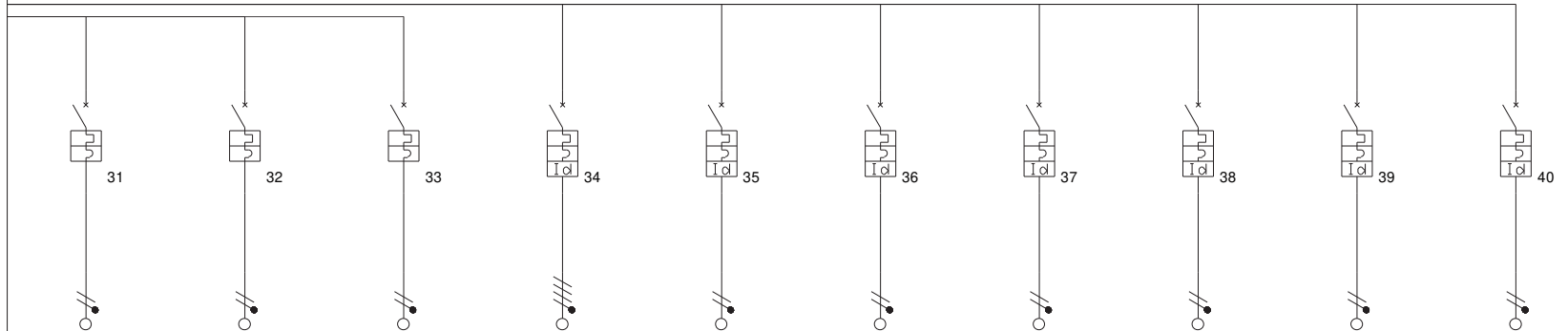
[illegible]

[illegible]

Calcolato

[illegible]

Calcolato

[illegible]

[illegible]

[illegible]

[illegible]

Progetto
25-011M-Hotel Padenghe

LUF

25-011M-E01p

400/230

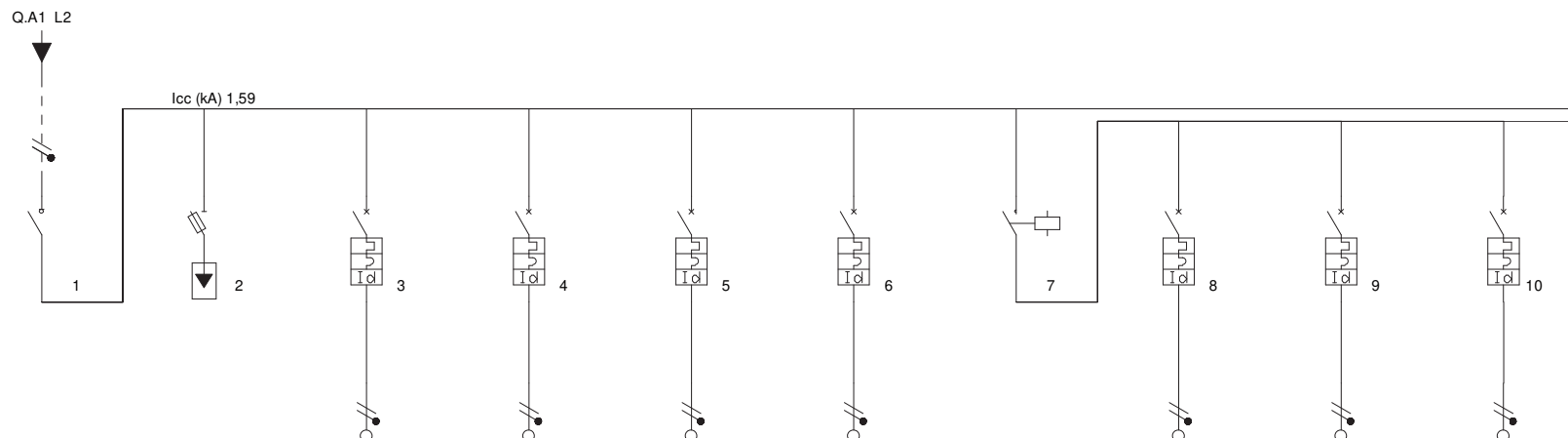
TT

Q.A2 - Quadro Appartamento Tipo

CEI EN 60947-2 Icu

CEI UNEL 35024 - 35026

Calcolato

[illegible]

[illegible]